

# Each model comes with a myriad of connections, just right for your network.

PRODUCT REVIEWS

Once a corporate network is in place, many companies decide to offer some connectivity to those outside of the business perimeter. This can be a costly endeavor especially if the proper safeguards are not in place to keep unauthorized users from breaching the environment or to prevent the entry of any number of content or rate-based threats hanging around the Internet. One of the key products on the market today that can prevent this type of activity from reaching your network environment is an IPS (Intrusion Prevention System) product such as the one produced by Top Layer. The company's IPS 5500-150 E-Series appliance is solid in this area and it wins our Editor's Choice Award for security and performance.

Although this review is about the 150 E-Series model, companies that need higher throughput may want to

look at other variations of this product. The 500E has higher ratings in several different areas along with a 2Gbps throughput and double that amount in Top Layer's 1000 E-Series. The 150 E-Series can handle up to a half million sessions at any point in time, which should be more than sufficient for any business hooked up to the Internet through a DSL or cable provider. Each model includes four GBIC Gigabit ports, two 1000Base-SX ports and four 10/100Base-T Ethernet ports -- we're sure you'll find the right connections for your network. A serial port can be used with a console. The standard model comes with a hot-swappable power supply although you can option for a dual power supply if desired.

Protection is offered through three different areas that include key defense against malicious content, worms and other threats. It comes with a powerful firewall that secures the environment through stateful

## Top Layer's IPS 5500-150 E-Series Appliance

**Summary:** Three key areas of defense make this a tough IPS appliance that receives our Editor's Choice Award for security and performance.

**Price:** \$35,000

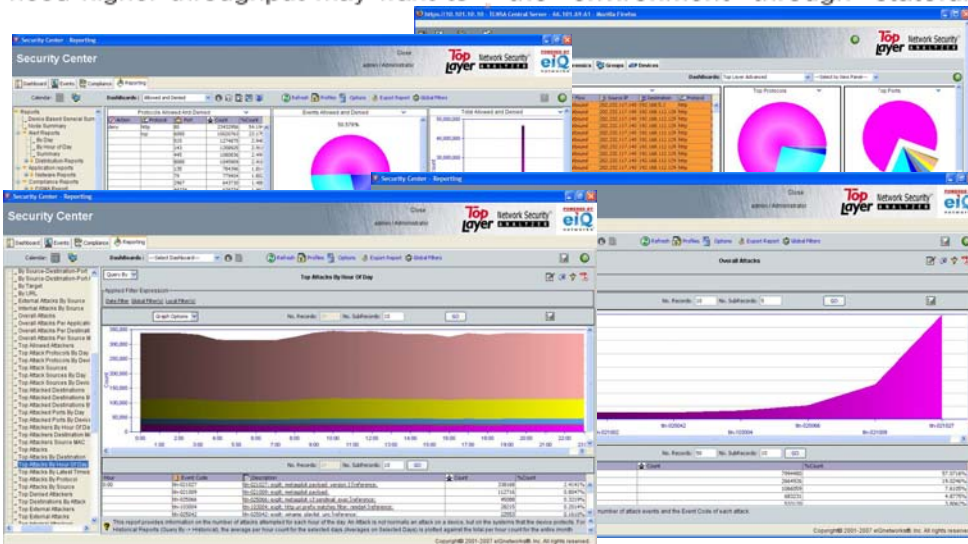
[www.TopLayer.com](http://www.TopLayer.com)

\*\*\*\*\*

**Top Layer**  
Security

inspection. Add Denial of Service (DoS) security through content and rate-based attempts and you have a well rounded appliance for this particular duty. It also includes a higher level of protection for server and client/desktop environments. Testing shows that it's capable of blocking one-hundred percent of the attempts made at placing various threats, viruses and worms into a test network. Flexible reporting, real time alerts about threats, and security event management are available with the unit's Network Security Analyzer.

Make sure that your network is protected from various threats looming around the Internet with the Top Layer IPS 5500 150 E-Series appliance that has a starting price that is approximately \$35,000. The company can provide you with more information on their family of IPS products at [www.TopLayer.com](http://www.TopLayer.com).



**EDITOR'S CHOICE AWARD**  
2008  
Service Provider  
**WEEKLY**